



GMT MONTHLY MEMBERSHIP PROGRESS REPORT

Results as of: 5/31/2019

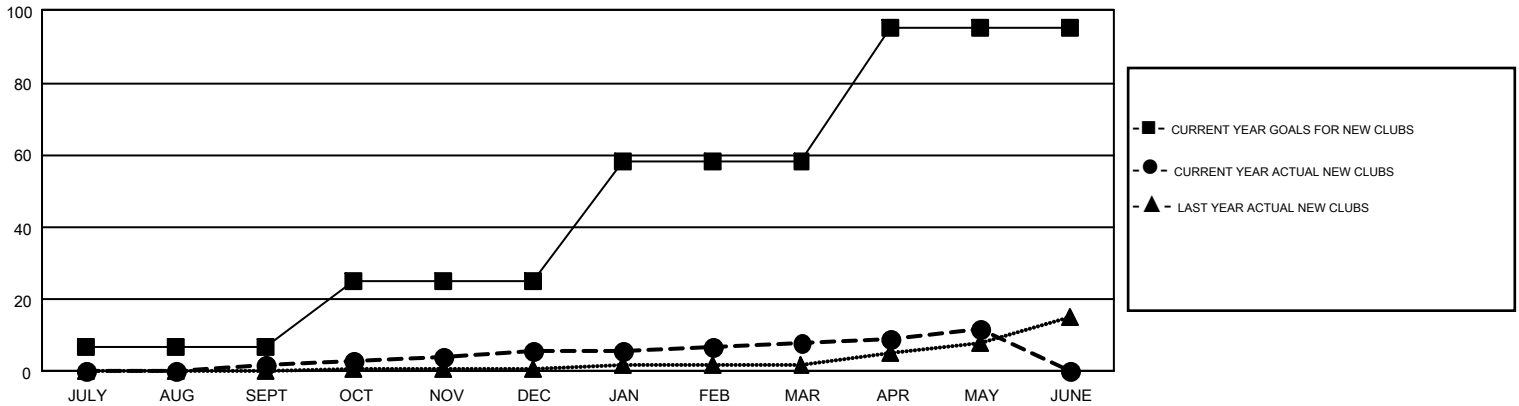
GMT Constitutional Area 4, Group D

GMT: JOOST PAIJMANS

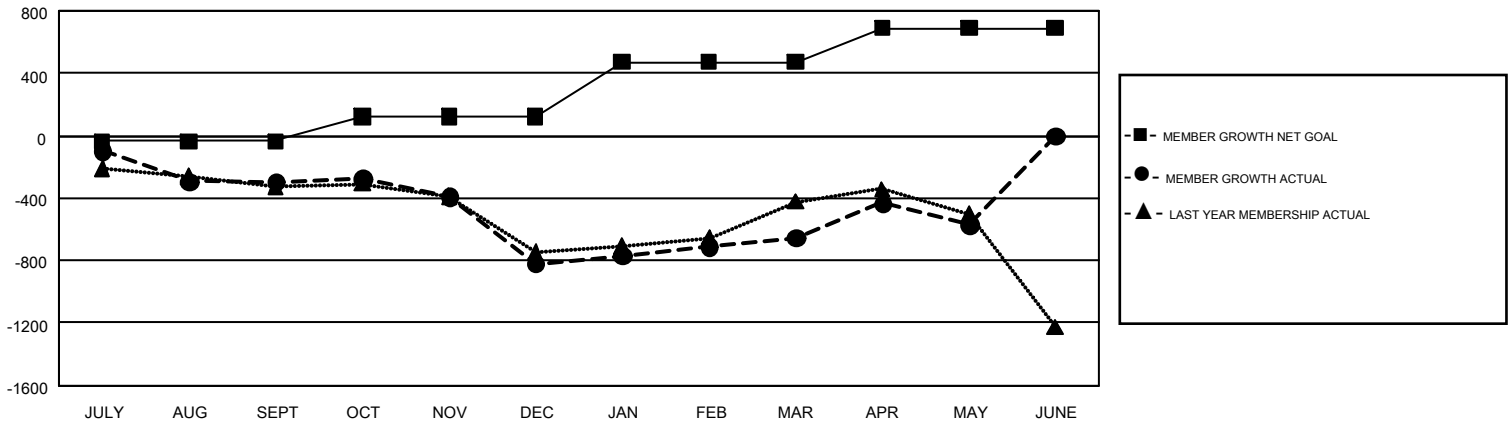
REPORT DOES NOT INCLUDE CLUBS IN UNDISTRICTED AREAS.

Clubs				Members			
RESULTS FOR 2018-2019				RESULTS FOR 2018-2019			
QUARTER	NEW CLUB GOAL	NEW CLUBS	DROPPED CLUBS	QUARTER	MEMBER GROWTH NET GOAL	MEMBER GROWTH ACTUAL	DROPPED MEMBERS ACTUAL (including transfers)
JULY/AUG/SEPT	7	2	13	JULY/AUG/SEPT	-34	583	790
OCT/NOV/DEC	18	4	8	OCT/NOV/DEC	156	584	1,040
JAN/FEB/MAR	33	2	6	JAN/FEB/MAR	352	742	510
APR/MAY/JUNE	37	4	2	APR/MAY/JUNE	217	687	557

GOALS AND ACTUAL NEW CLUBS CUMULATIVE



GOALS AND ACTUAL MEMBERS CUMULATIVE



DROPPED CLUBS: 29	864 CLUBS OF 1,517 ADDED 1 OR MORE NEW MEMBERS	<u>GENDER DISTRIBUTION</u>	
<u>DROPPED MEMBERS</u>		MALE	22,480 (70.42%)
DECEASED	252	FEMALE	9,443 (29.58%)
CLUB CANCELLED	101	TOTAL FAMILY UNIT MEMBERS	
OTHER	2,544	2,973	
TOTAL	2,897	FAMILY MEMBERS PAYING HALF DUES	
		1,520	

[CLICK HERE FOR CUMULATIVE MEMBERSHIP DATA](#)